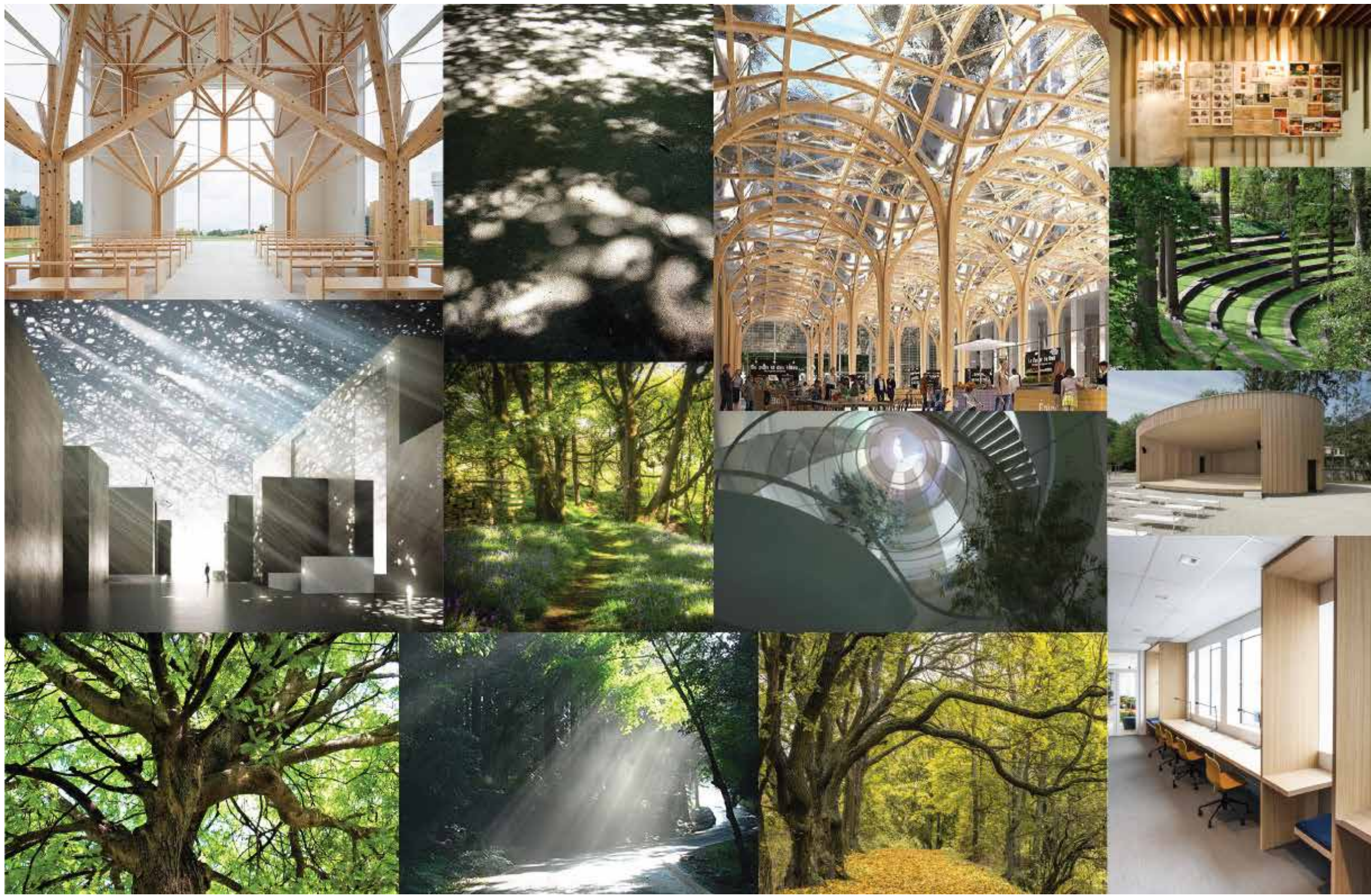


COLLAGE

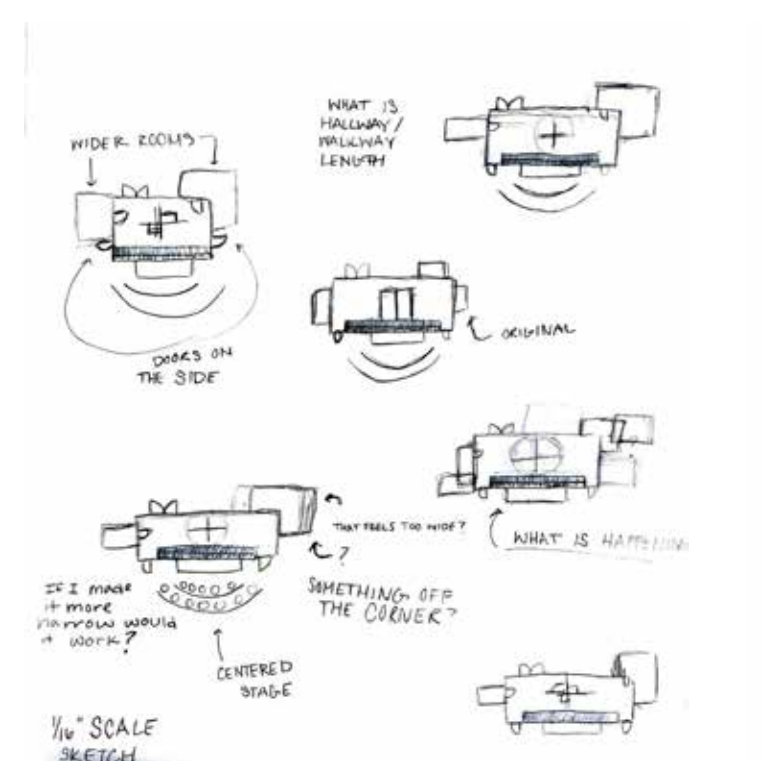
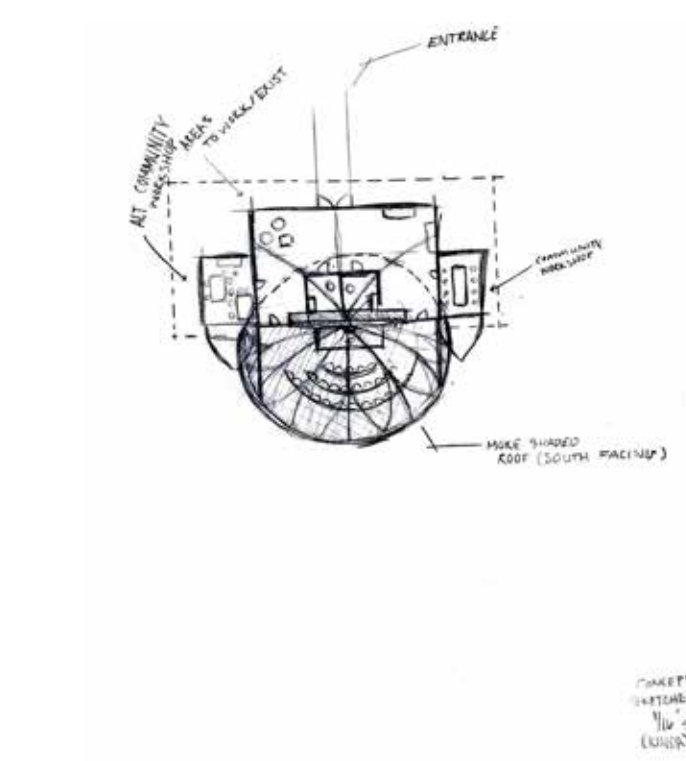
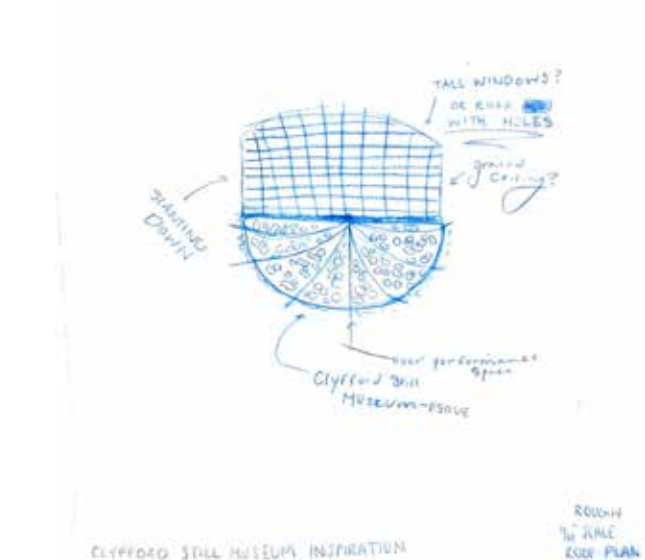
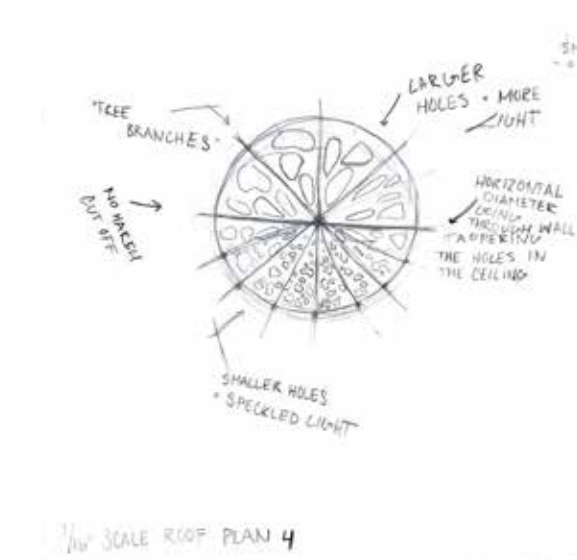
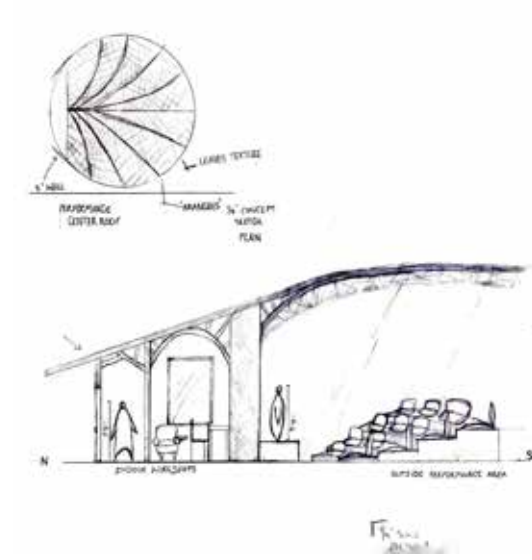
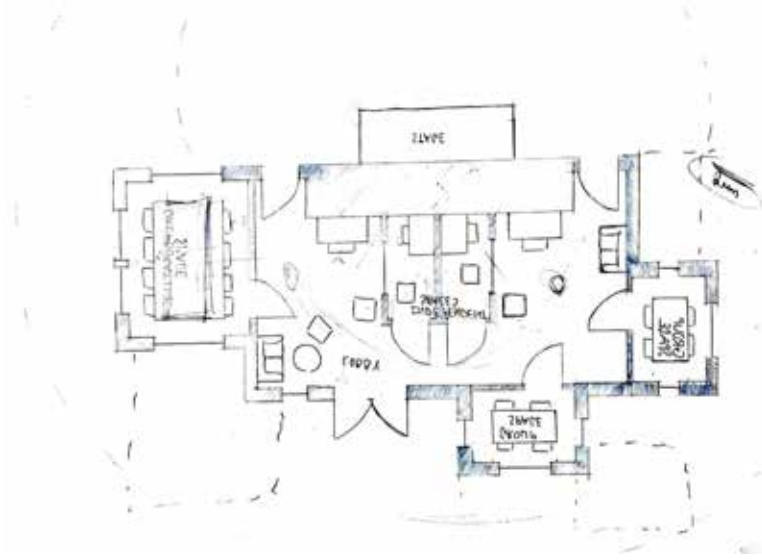
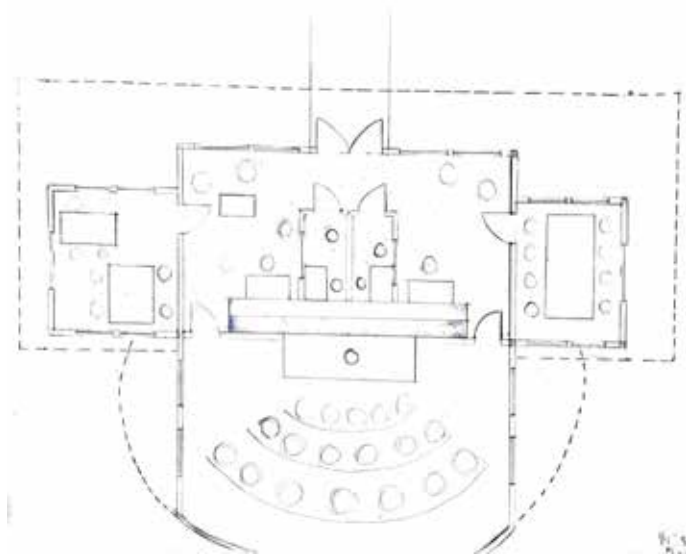


PROJECT NARRATIVE

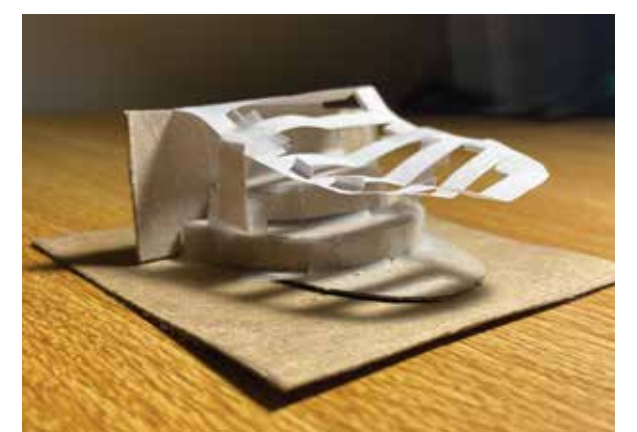
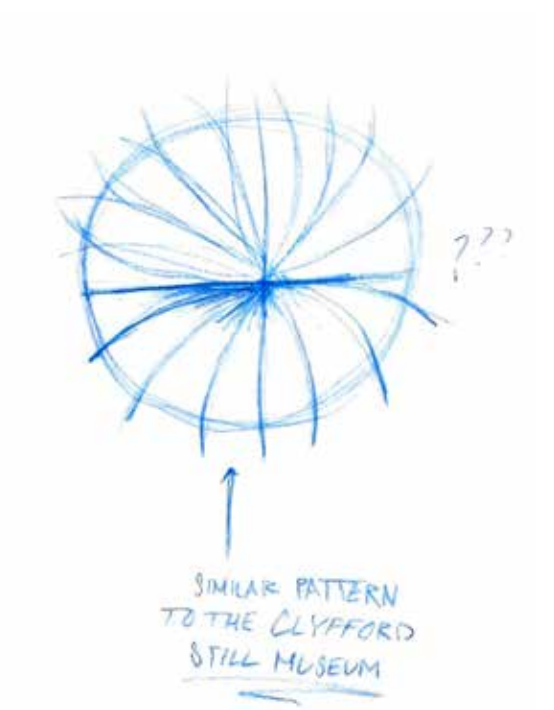
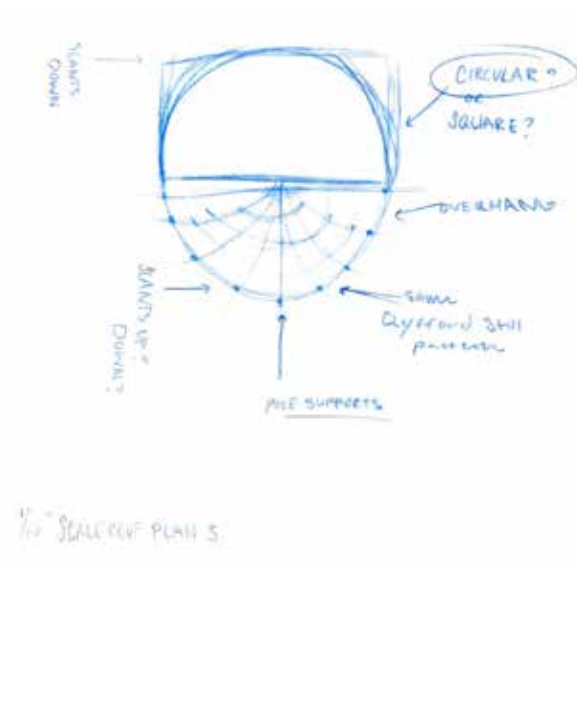
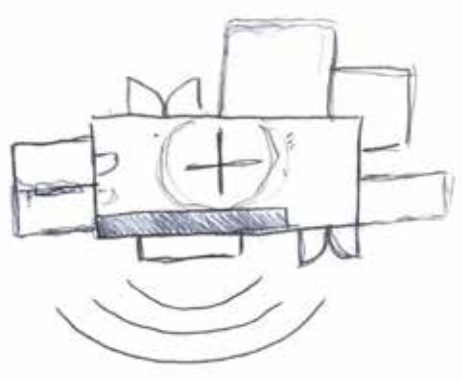
THE SUN PATHS THAT WERE CREATED FROM THE SITE HEAVILY INSPIRED THE OUTCOME OF THIS DESIGN. THE EXTREME SUN FROM THE SOUTH OF THE SITE GENERATED THE IDEA OF CREATING A MOMENT OF DAPPLED LIGHT IN A PERFORMANCE SPACE, LIKE SUNLIGHT FILTERING THROUGH TREE LEAVES. THAT TREE IMAGERY INSPIRED MANY ASPECTS OF THIS DESIGN, INCLUDING A TRUNK LIKE STABILITY IN THE THREE FOOT MASONRY WALL THAT CAME OFF THE EXISTING STONE WALL FROM THE SITE, BRANCHES WHICH INSPIRED THE LONG BEAMS SUPPORTING THE ROOF THAT CAN BE SEEN IN THE SECTION AND PLAN DRAWINGS, AND THE ASYMMETRICAL AND SPORADIC GROWTH OF A TREE INSPIRED THE LAYOUT OF THE FLOOR PLAN AS WELL AS INTENTION FOR THE PROGRAM TO GROW IN ITS LIFETIME.

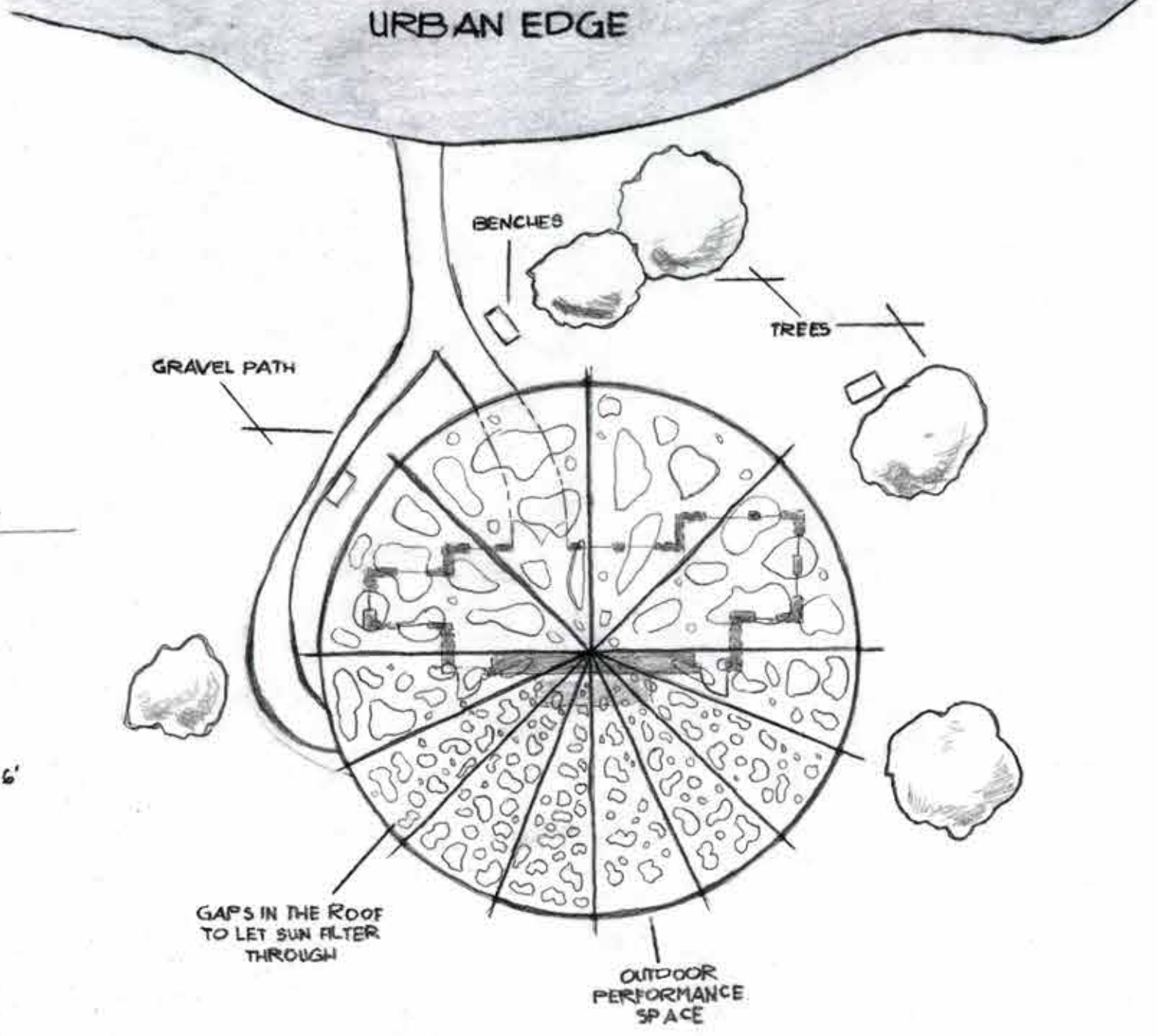
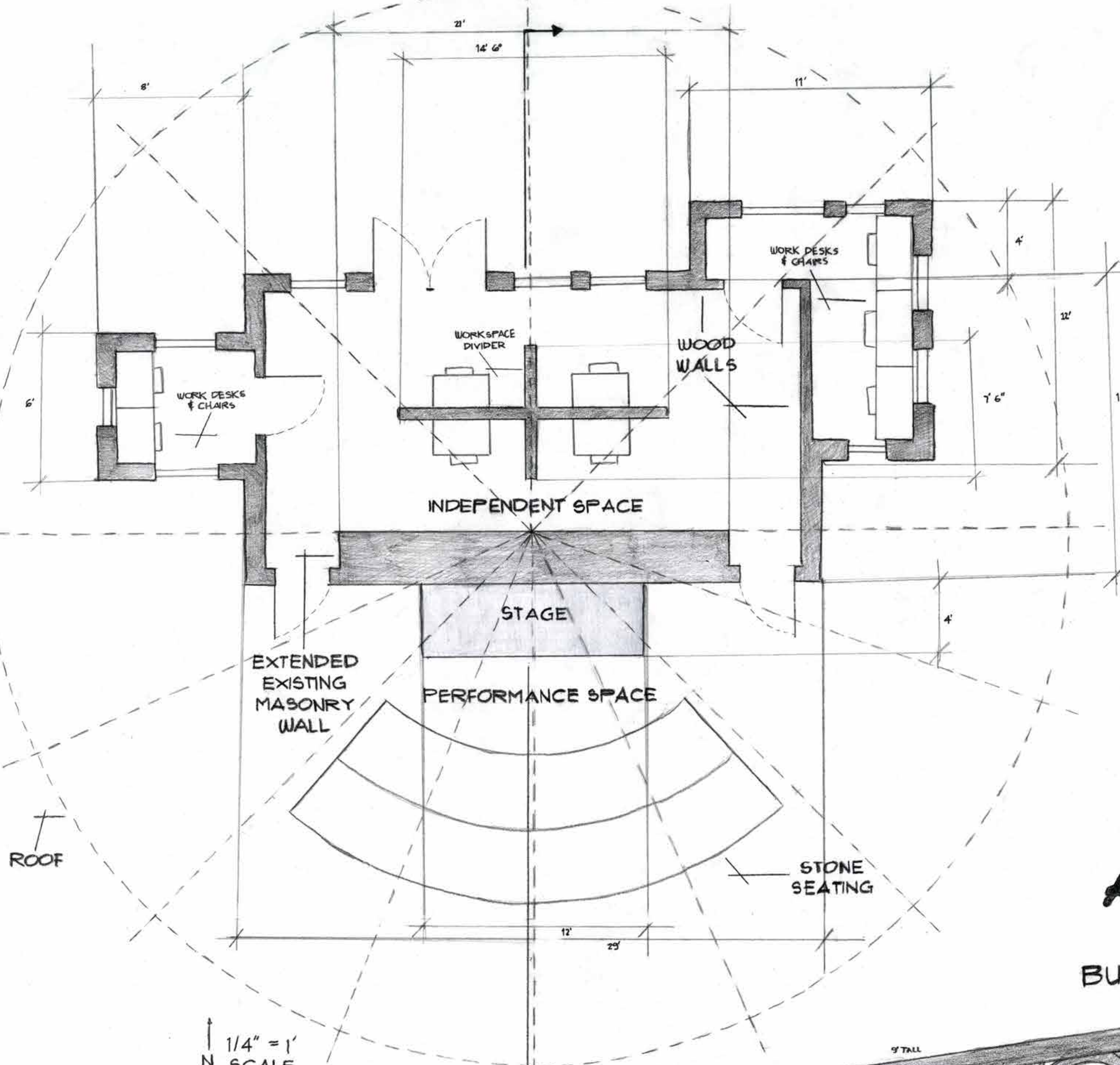
THERE WAS AN INTENTIONAL SEPARATION OF THE PERFORMANCE SPACE AND THE INDEPENDENT SPACE TO GIVE POETS A NOISE SEPARATION FOR QUIET WORK AND AN AMBIANCE FOR PERFORMANCE. THE INTENTION BEHIND GIVING SEPARATE ROOMS FOR INDEPENDENT SPACE WAS FOR OPPORTUNITIES OF COLLABORATION AND GROUP WORK AND WELL AS SPACE FOR INDIVIDUAL WORK BY ADDING DESKS AND A DIVIDER IN THE MIDDLE OF THE MAIN ROOM. THE LARGE MASONRY WALL WAS INTENTIONALLY LEFT BLANK FOR POETS TO SHARE THEIR WORK AND CREATIVITY BY PINING UP ON THE LARGE TWENTY-ONE FOOT SPACE. THE SPACING OF THE HOLES IN THE CEILING WAS TO DEMONSTRATE ANOTHER HOMAGE OF A TREE AND TO GIVE THE AREAS A DIFFERENT AMBIANCE OF LIGHTING. FOR EXAMPLE, THE LARGER HOLES ON THE INDEPENDENT WORKSPACE LEFT ROOM FOR MORE SUNLIGHT TO SEEP THROUGH TO MAKE A BRIGHT WORK ENVIRONMENT, AND THE SMALLER MORE CONDENSED HOLES IN THE PERFORMANCE SPACE GAVE A DRAMATIC PATTERN OF FILTERED LIGHT THAT GENERATED A SPECIFIC MOMENT WHICH WOULD CAUSE A PERFECT ENVIRONMENT FOR PERFORMING POETRY.

PROCESS PHOTOS



EXPANSION - GROWTH





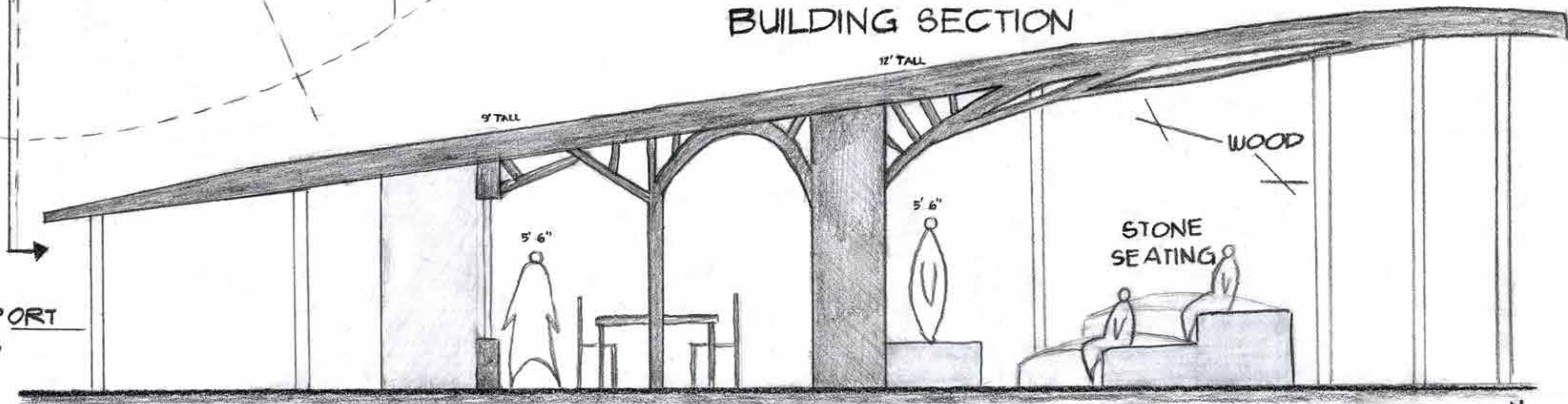
SITE PLAN



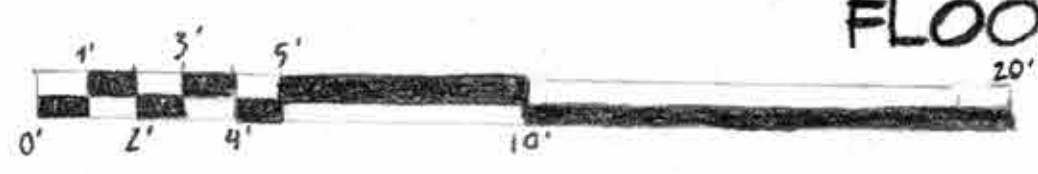
LAKE N 1/16" = 1' SCALE

ARBOR MILL

BUILDING SECTION



1/4" = 1' SCALE ← N



1/4" = 1' N SCALE

FLOOR PLAN

TORIA LINDENMUTH
STUDIO 1020 SECTION 213
A.3
12 - 08 - 2021