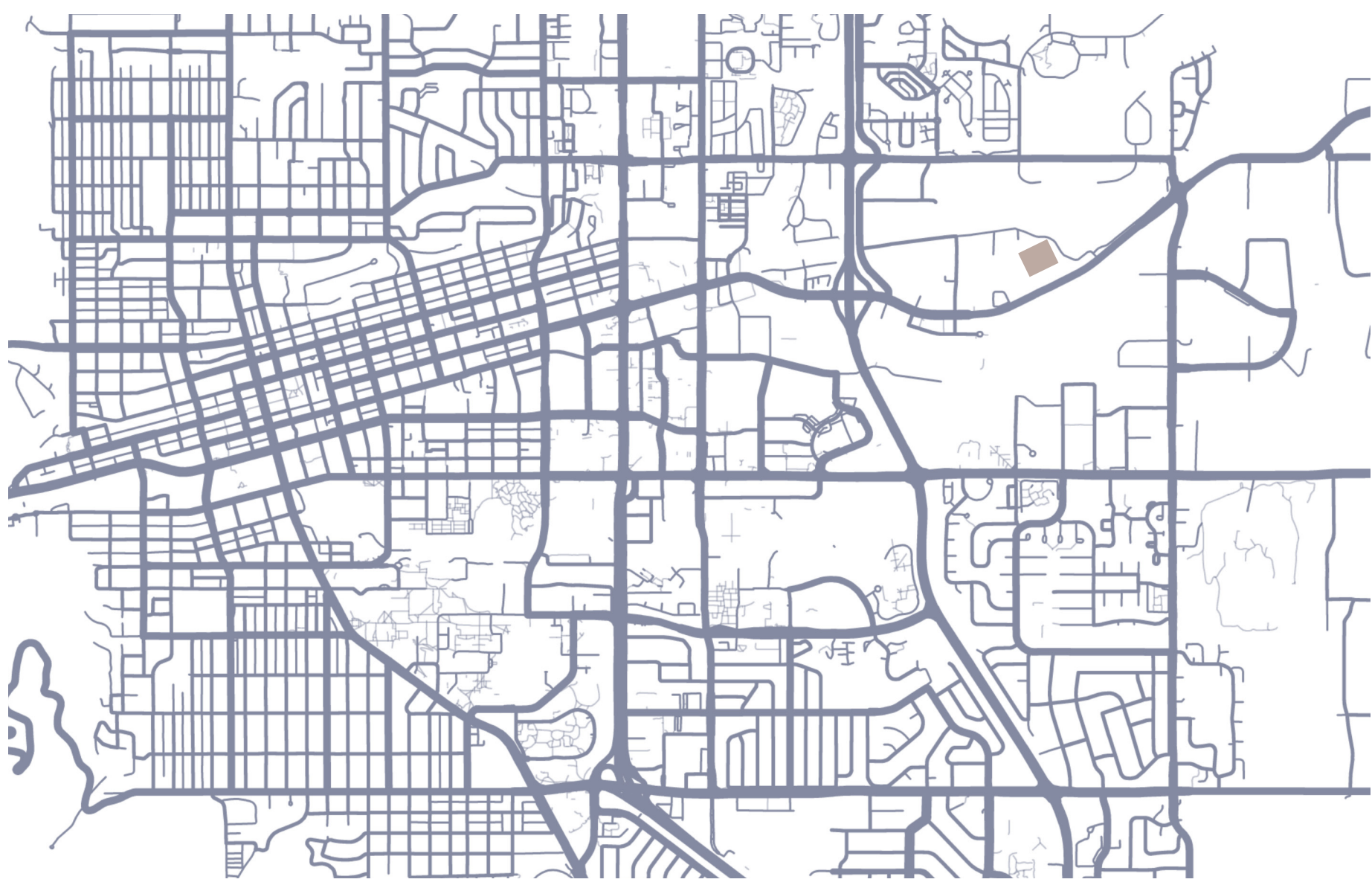


NET CUBED

FUTURE SUSTAINABLE OFFICES

PROJECT STATEMENT

Net Cubed will be the future of office spaces in Boulder County and set a new standard for net zero capabilities around the nation. Around the world, building emissions play a huge role in global warming resulting in toxic living environments. Designing a space that uses the elements from the surrounding area is crucial and will change many people's work lives. The space will be filled with sunlight, fresh air, and nature. All the energy produced for the building will be solar, and the water will be recycled through rain collection. This office space consists of multiple cubes that maximize each cube's efficiency and the people who work in it. It will bring employees together by creating a unique open space that enhances motivation. The building will maximize the views and sunlight traveling through the UV-protected windows. Net Cubes is also positioned next to the public area on the campus so employees will be able to socialize with others. Becoming energy efficient is a necessity due to the rise in climate change. The building will feature two facades. One will be an exoskeleton glass panel system that wraps the entire cube floor to ceiling. This will cool the building yet attract citizens of its unique shape. The other facade will be recycled wood that shades each office window while maximizing the views. There will be open collaboration rooms, a cafe, and an eatery on the main level of the building. For office space, there will be both public and private spaces. This gives the employees the opportunity to switch around to strengthen the workforce. Looking into the future, this building will be a friendly, home-feel environment for employees to work in. Solving these climate issues will inspire citizens to design net zero for a cleaner future. Overall, Net Cubed will be an inviting place for everyone and set goals for the future of sustainability.



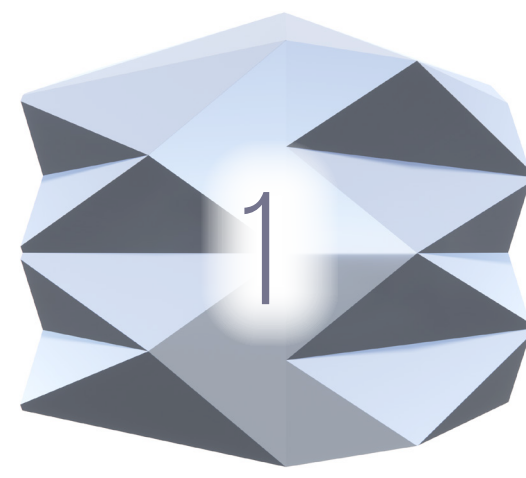
SITE LOCATION

5050 PEARL STREET
BOULDER, CO 80301



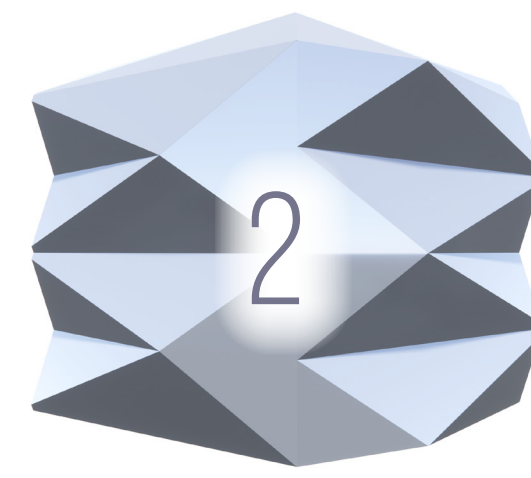
NET CUBED

THREE FORMS OF ENERGY



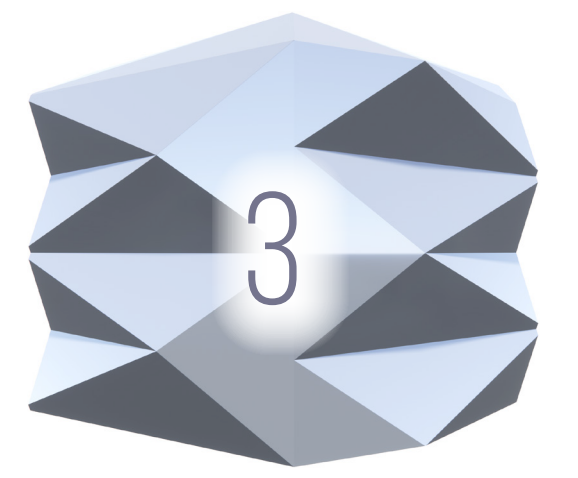
WORKFORCE

COLLABORATION
EXERCISE
HYBRID WORK



STRUCTURE

SHADE FINS
SOLAR
WATER COLLECTION



ENVIRONMENT

SUNLIGHT
WIND
FLOODING

SITE PLAN



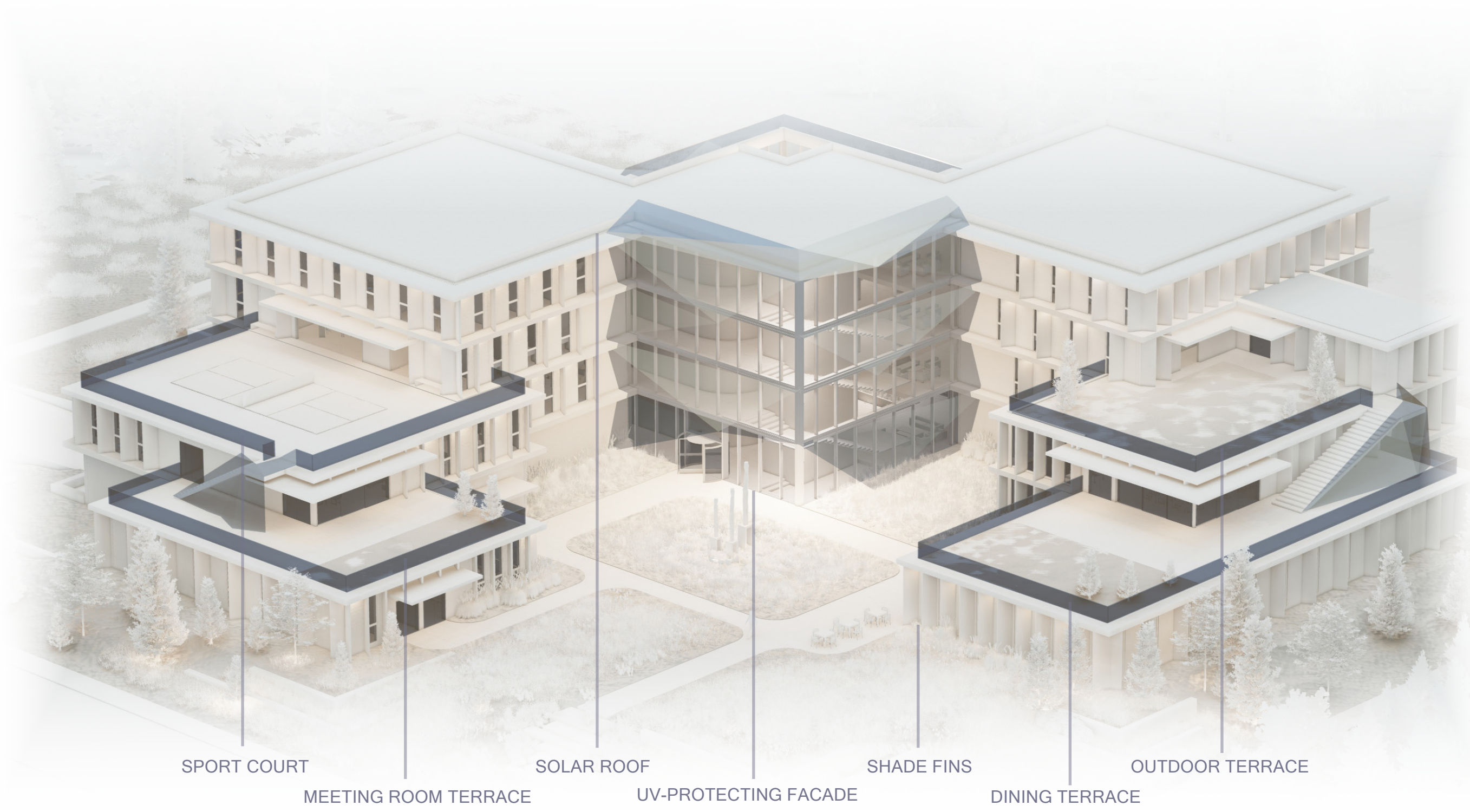
COURTYARD PERSPECTIVE





EAST ELEVATION

OUTDOOR CIRCULATION



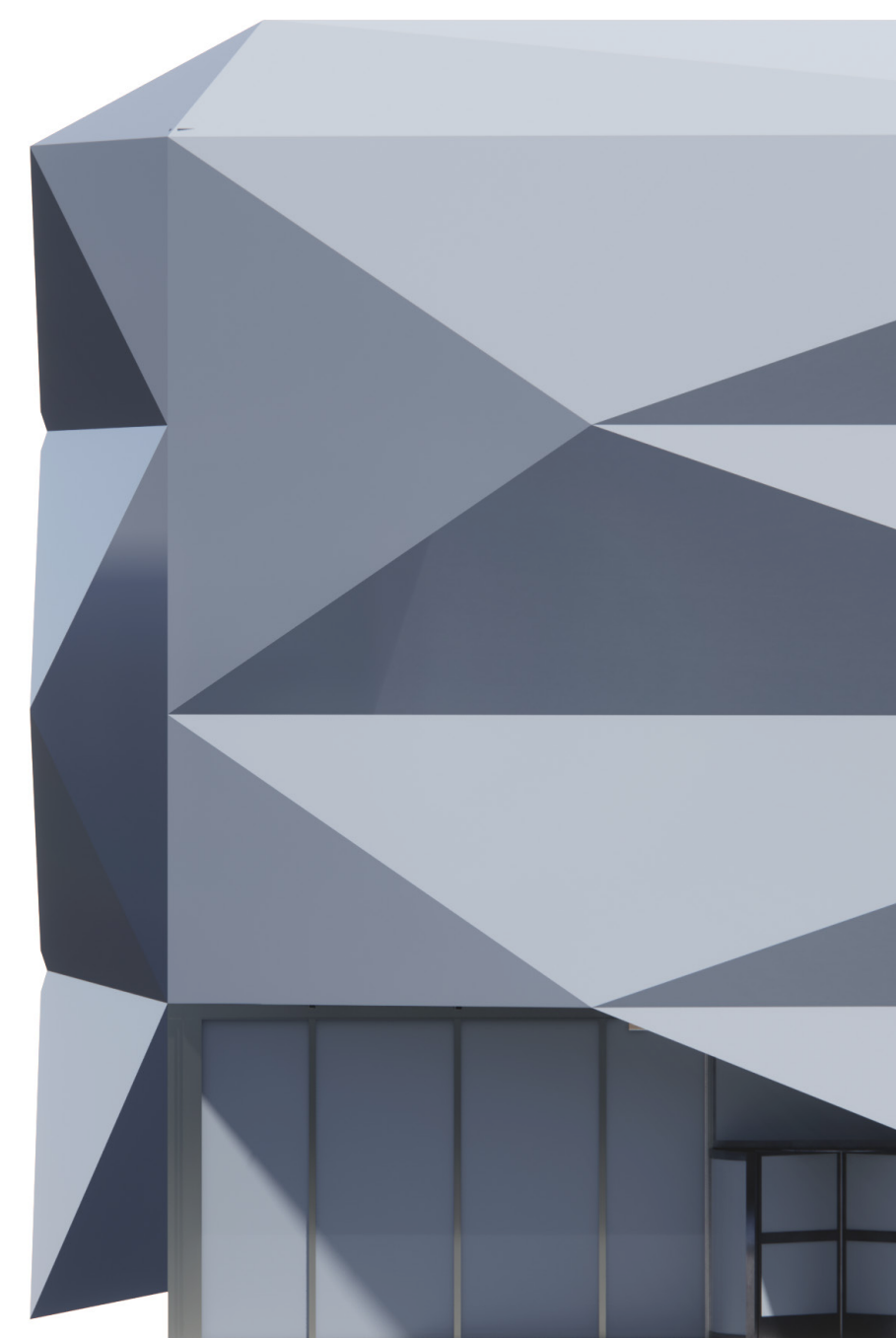
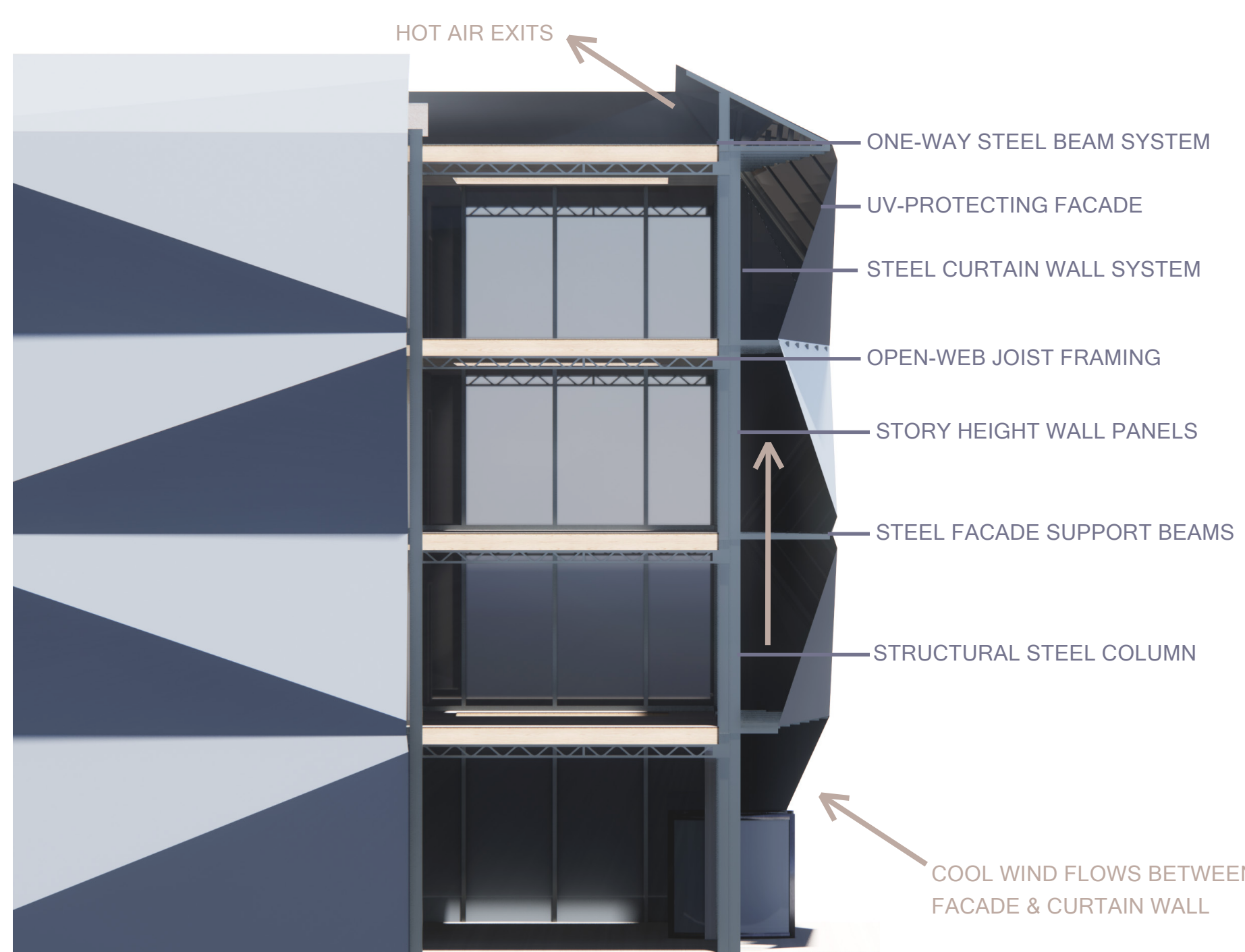
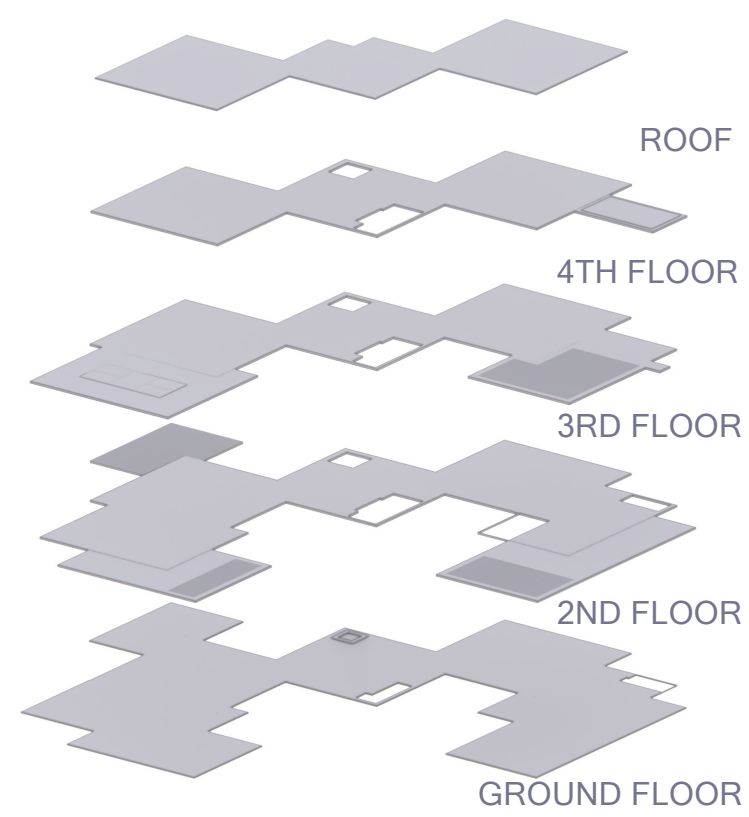
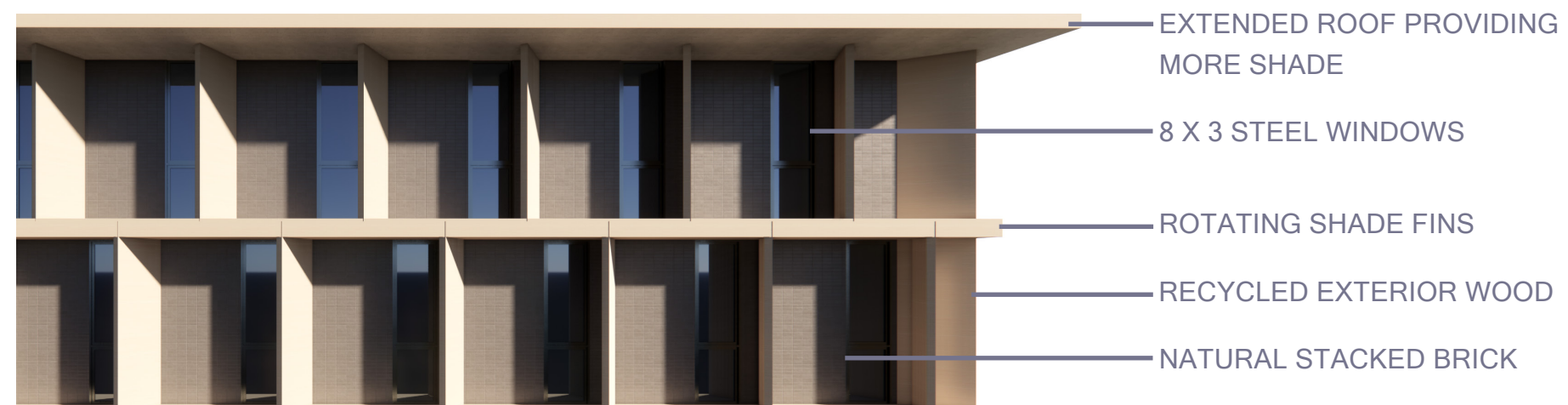
SPORT COURT

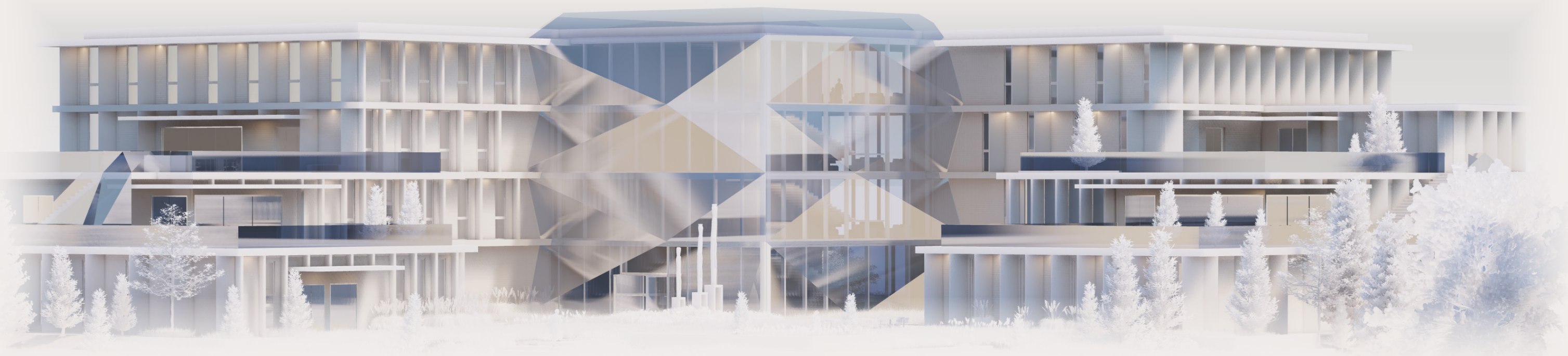


INTERIOR STAIRCASE



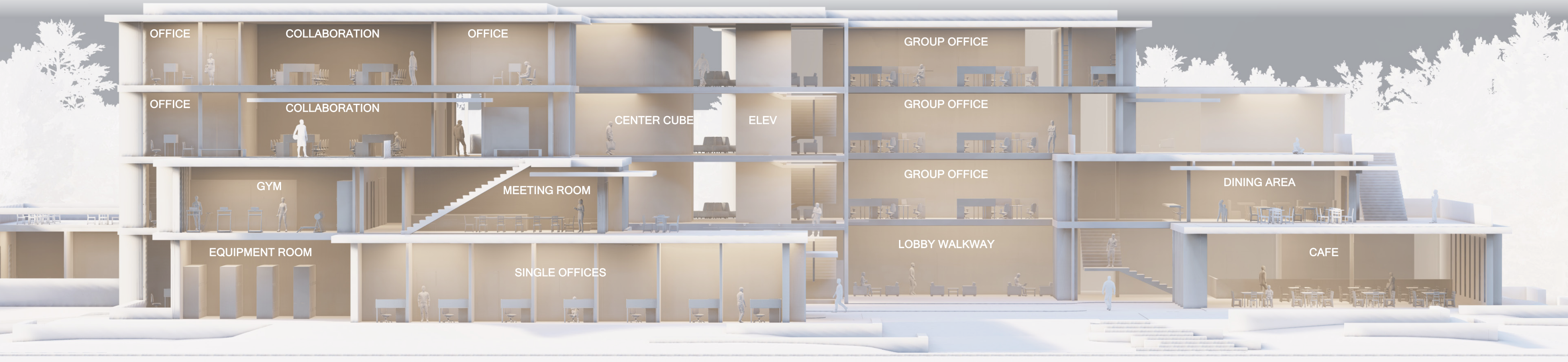
STRUCTURE & BUILDING TECHNOLOGY





SOUTH-WEST ELEVATION

WEST SECTION



ENTRY AT SUNSET



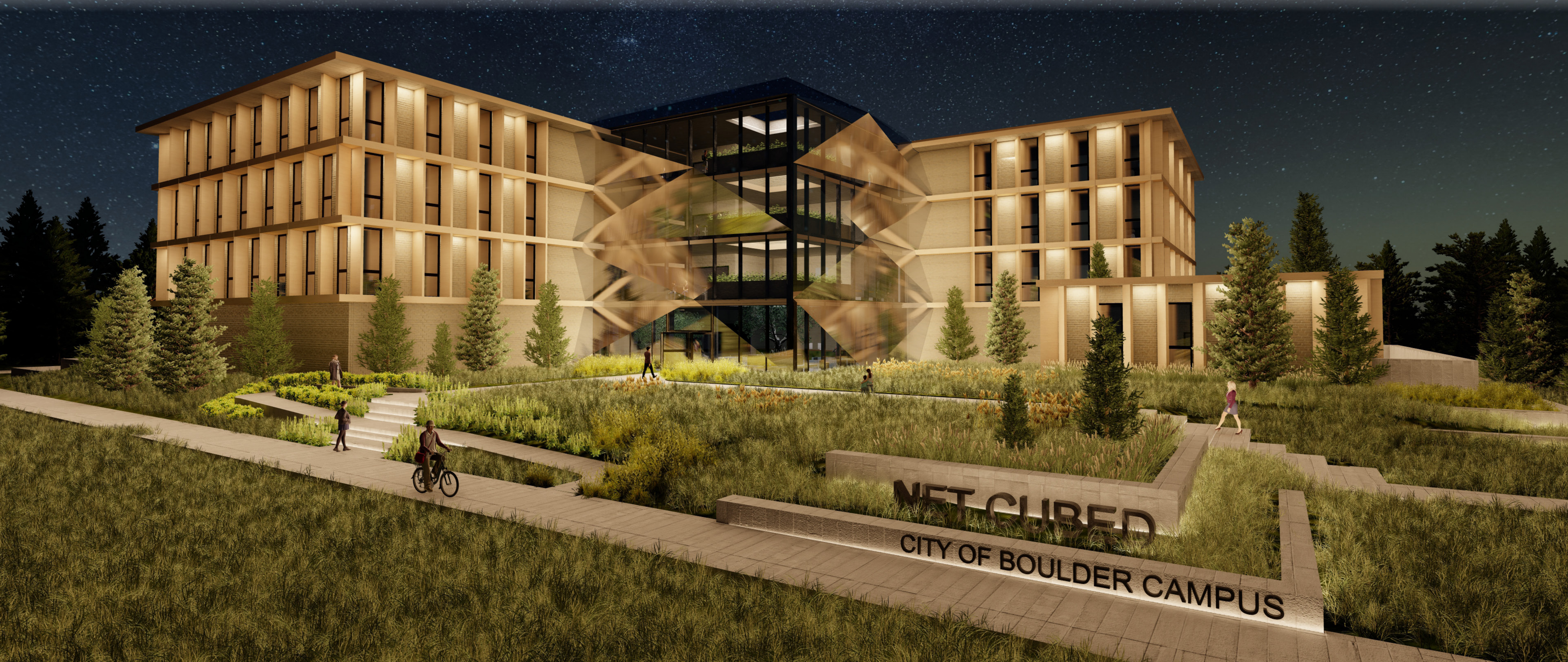
INTERIOR LOBBY

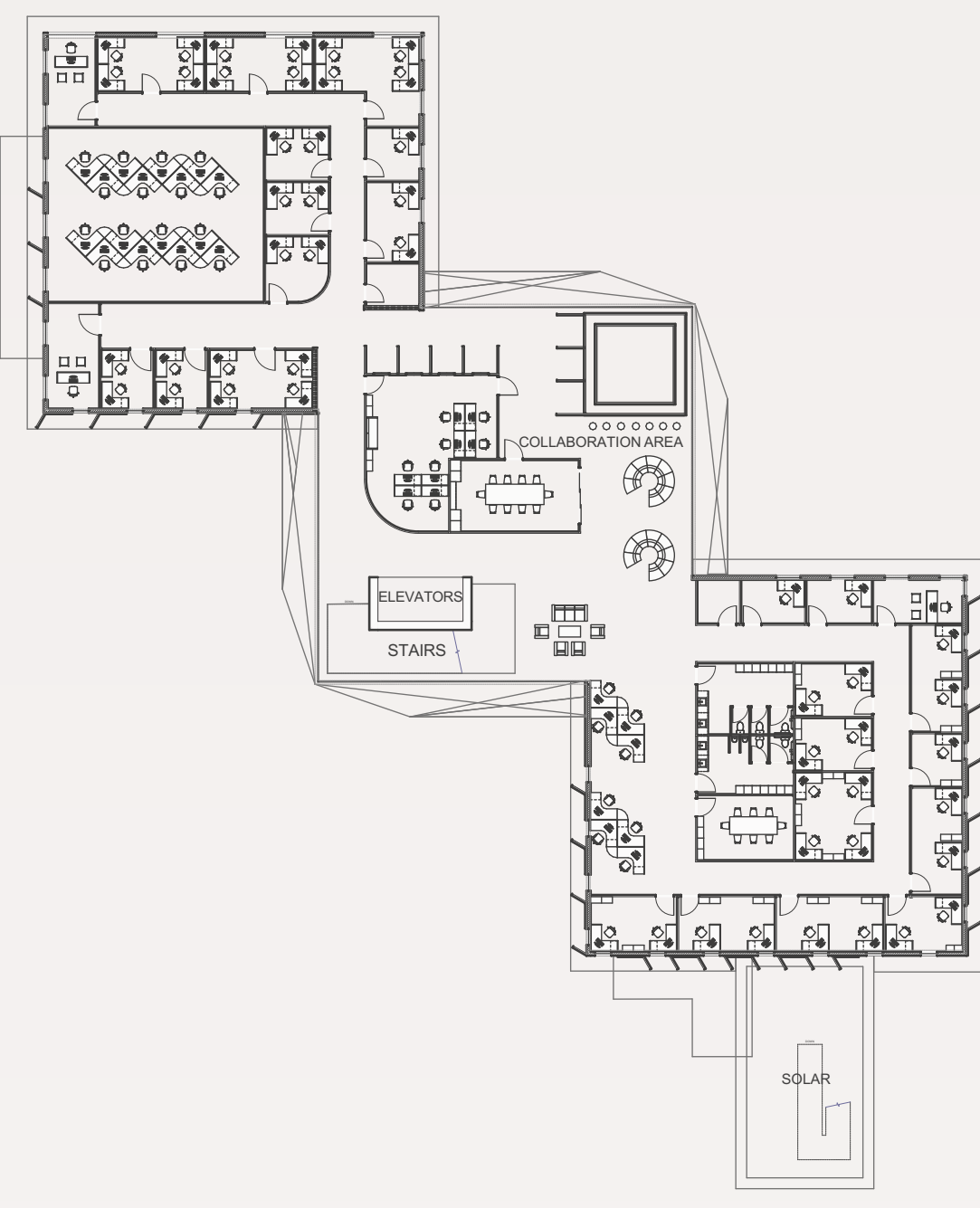


COURTYARD AT SUNSET

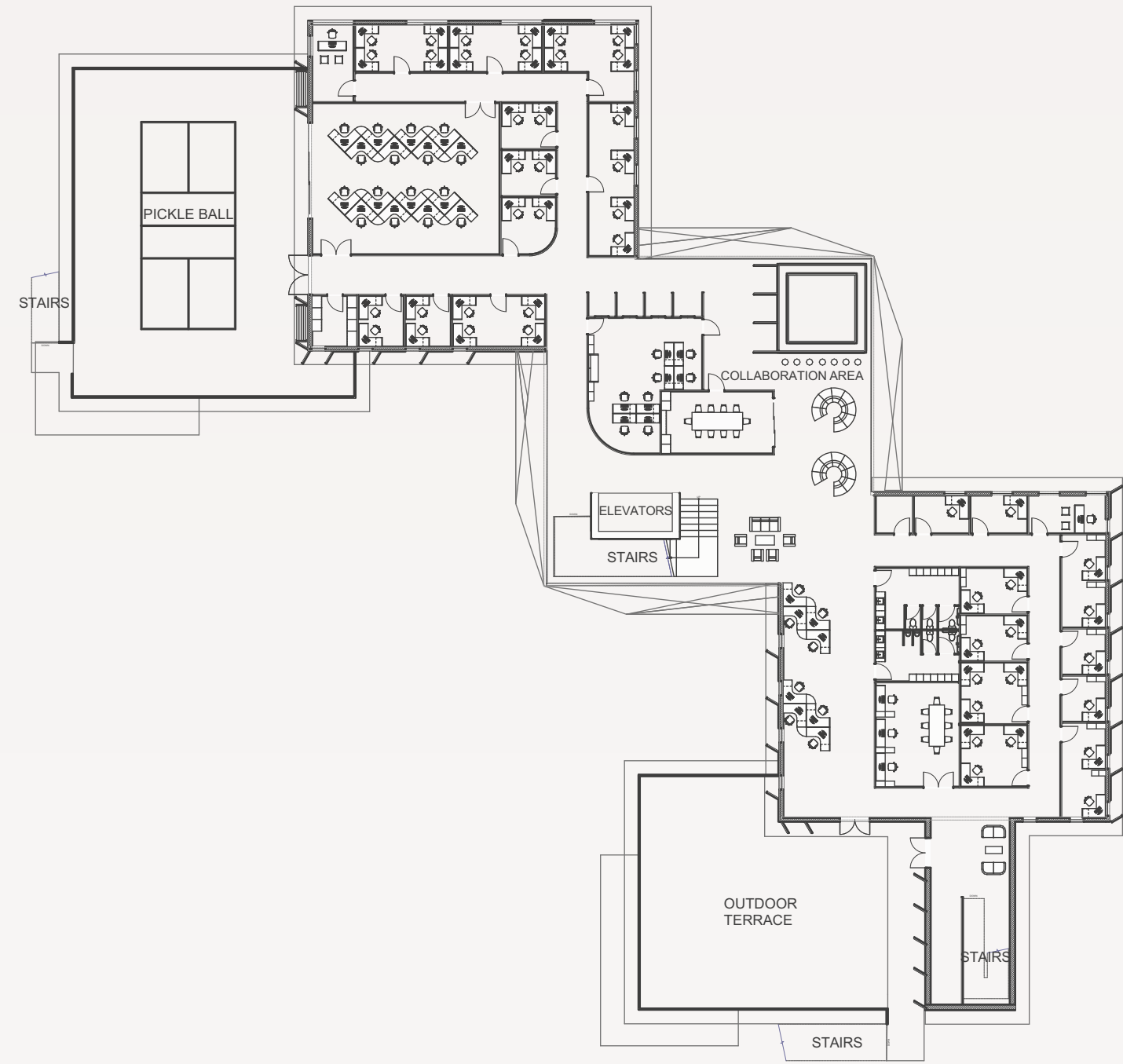


ENTRY PERSPECTIVE

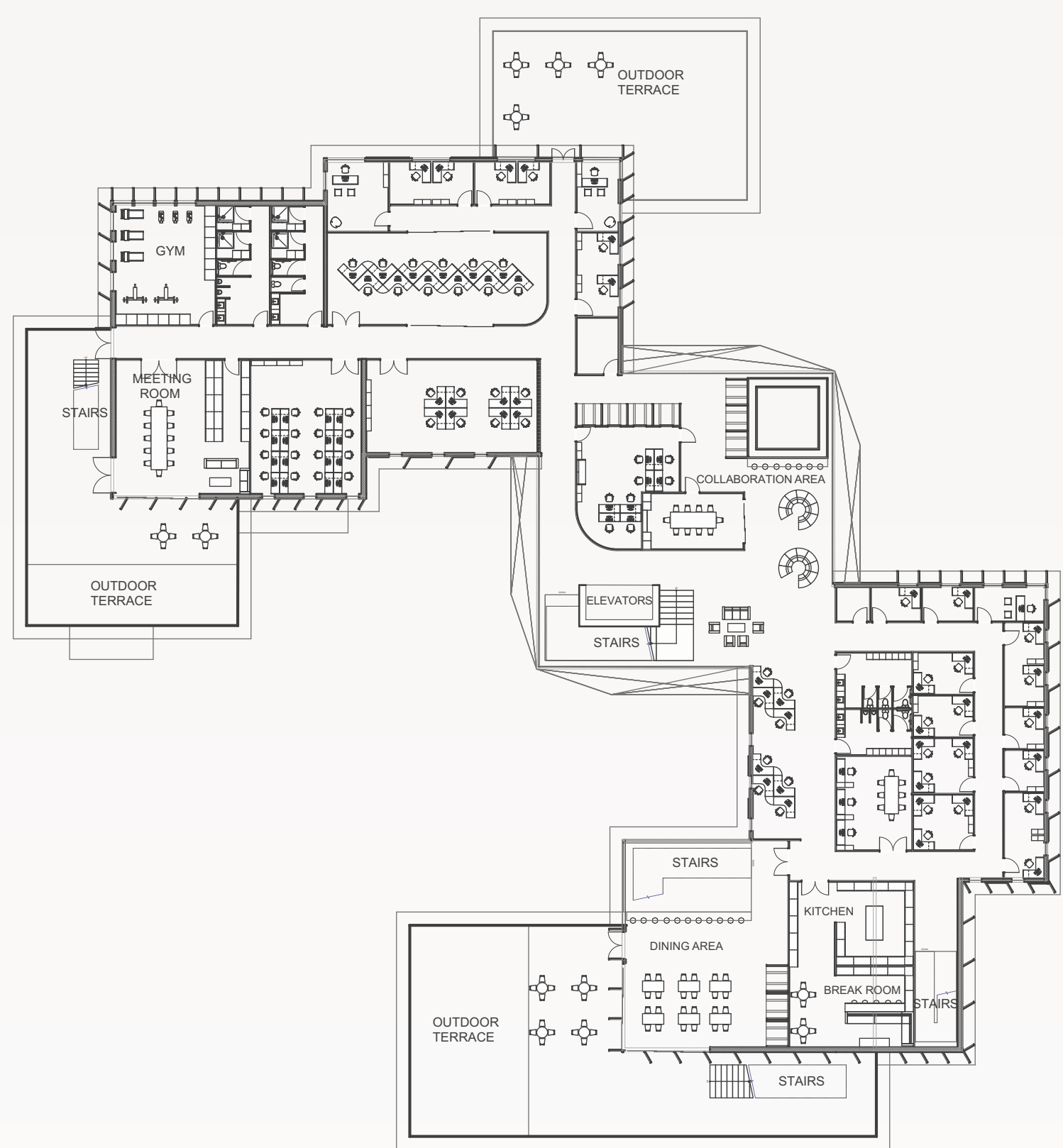




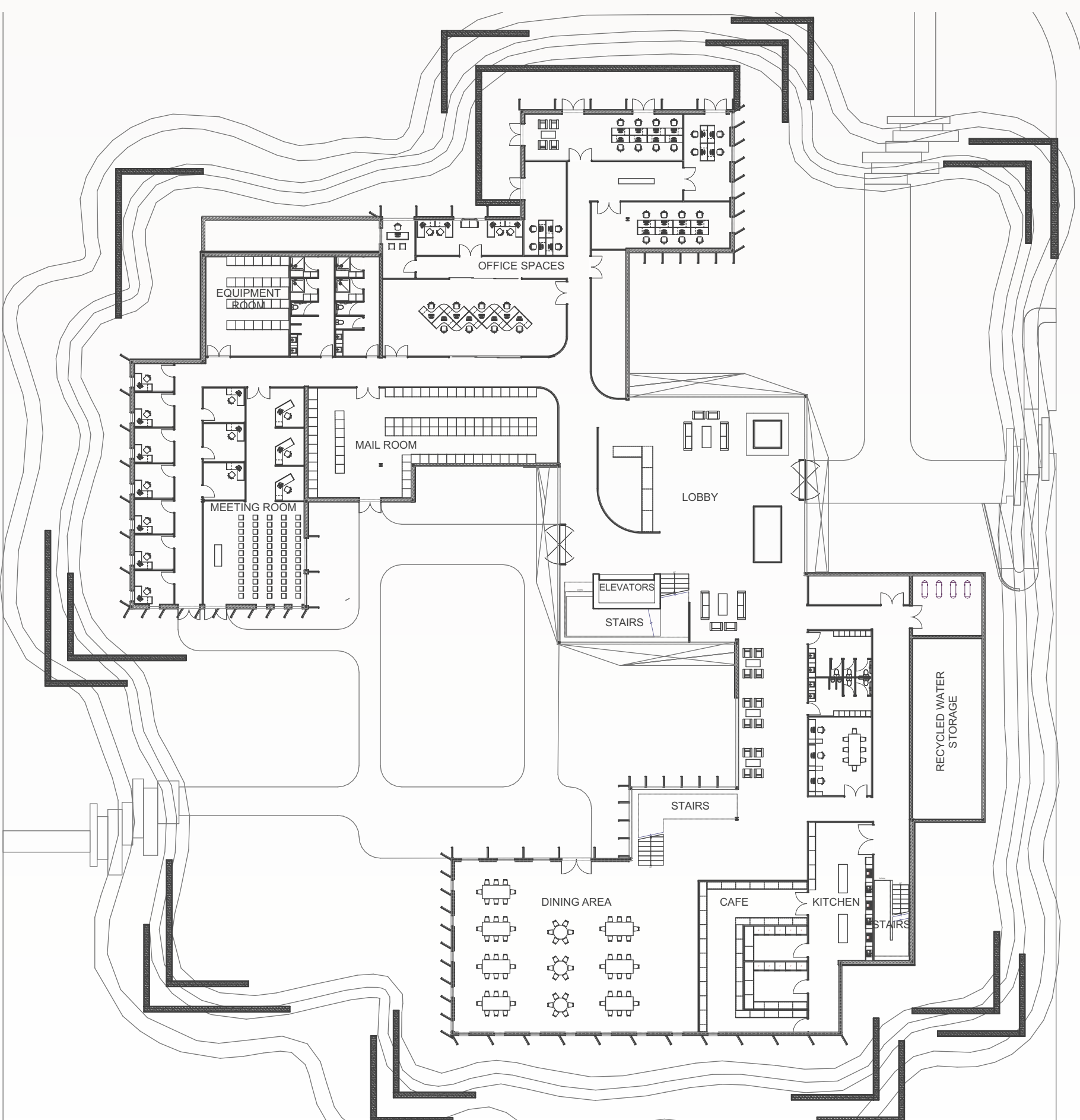
FOURTH FLOOR



THIRD FLOOR



SECOND FLOOR



FIRST FLOOR